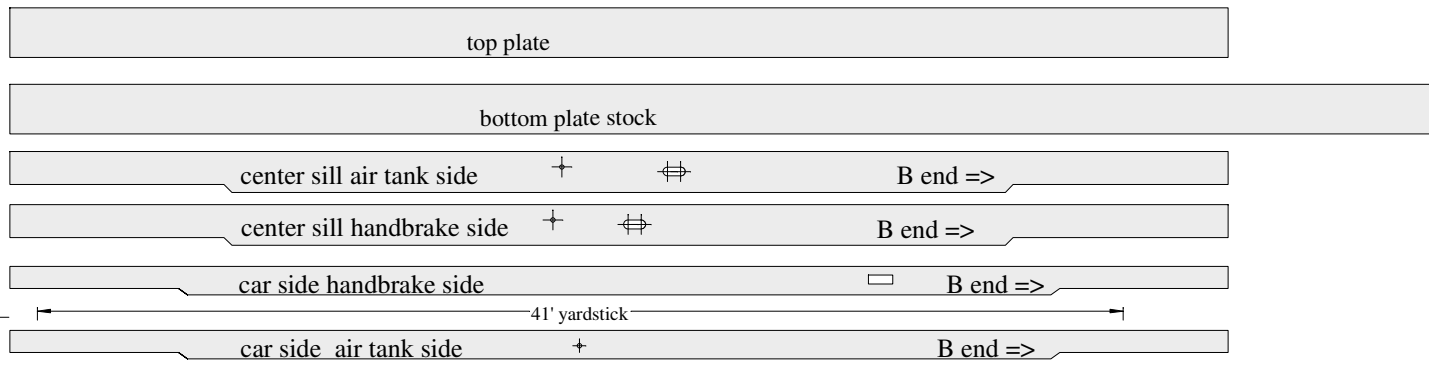
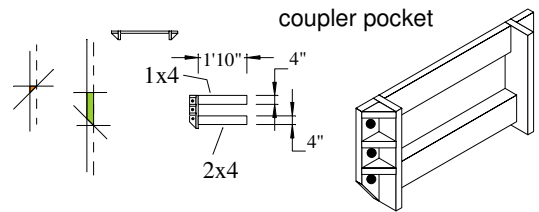
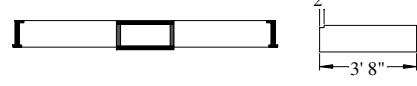
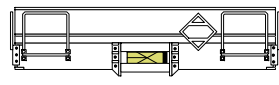
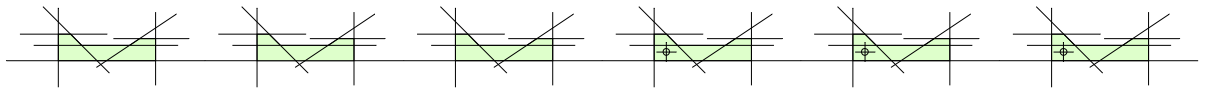
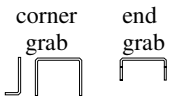


brake equipment superimposed over other components
 long chain : 10' 6"
 short chain : 4'

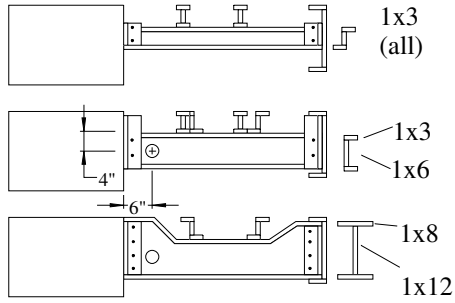
③ number indicates general order in which to install longitudinal rails
 * rails shown below other components for clarity

41' yardstick



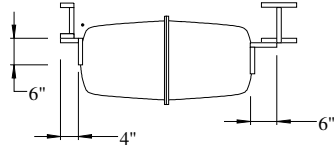


cross members + long members and air line holes

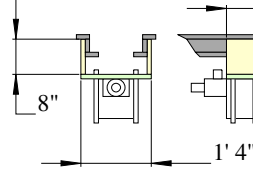


brake lever haner

air tank is mounted on 8" wide L brackets

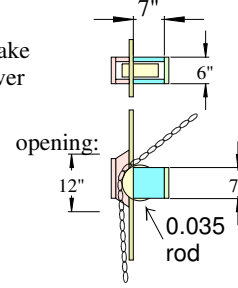


control valve mount

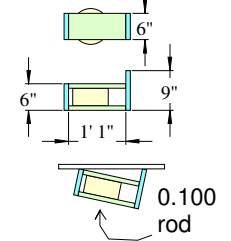


brake lever

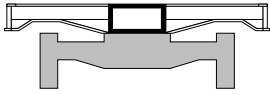
pully at car side



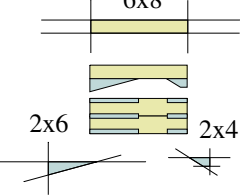
pully near cylinder mounted on angle to bottom of brace



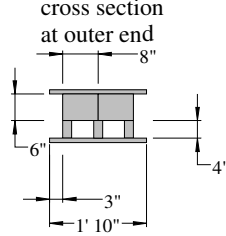
truck bolster



truck bolster components and orientation



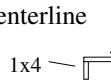
truck bolster cross section at outer end



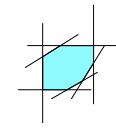
corner bracing cross section



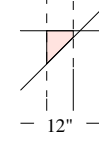
cross section of 2' long container support along car centerline



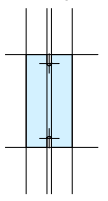
hand brake mounting plate



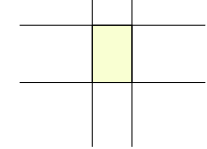
brake cylinder mounting plate



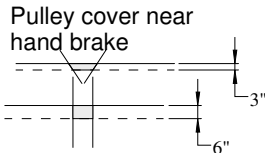
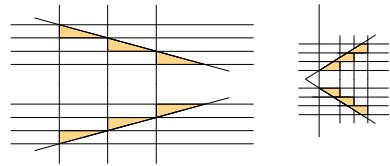
B end deck plate



deck plate at A end bolster



cutting template for 2x6 & 2x4 pieces for truck bolster. Cut 3 pieces at a time to maintain the same angle for all 3

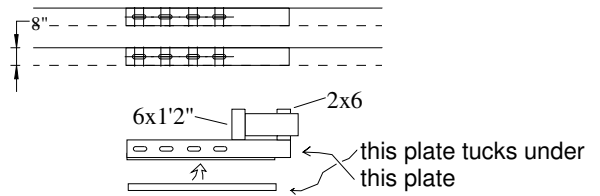


41' yardstick

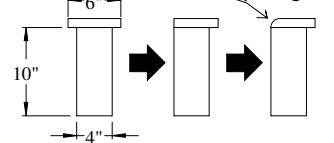
sill extension supports



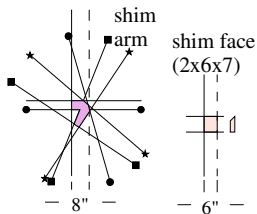
A end deck plates



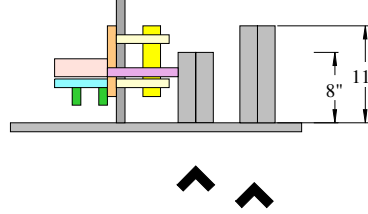
CONTAINER BULKHEADS round top edge



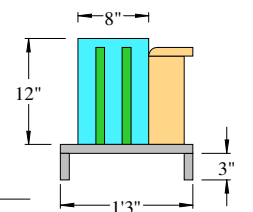
A end container shoe



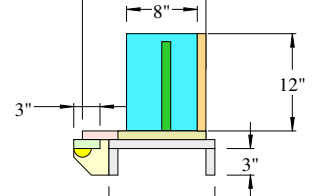
top



B end container shoe



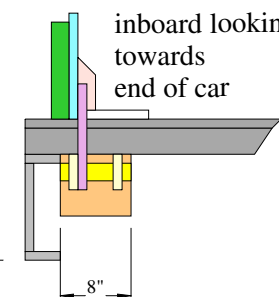
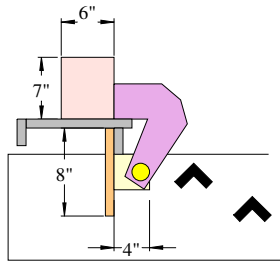
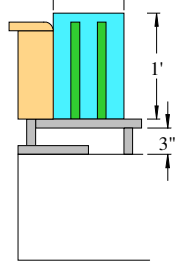
container shoe over truck bolster



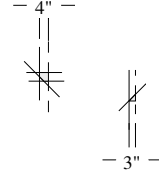
shoe

shim

end view



shoe hinge bracket



hinge bracket support

