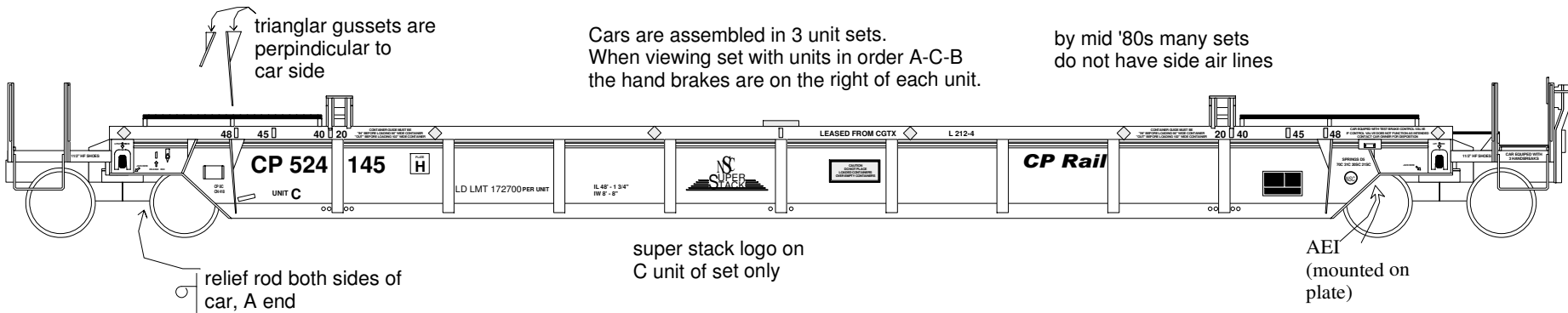
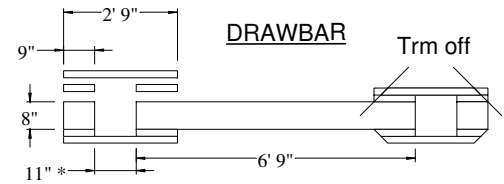
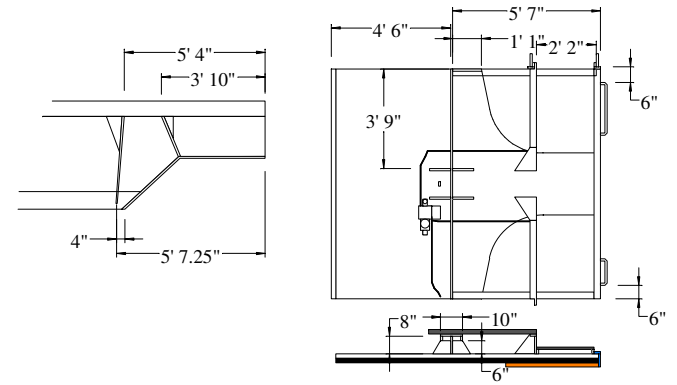
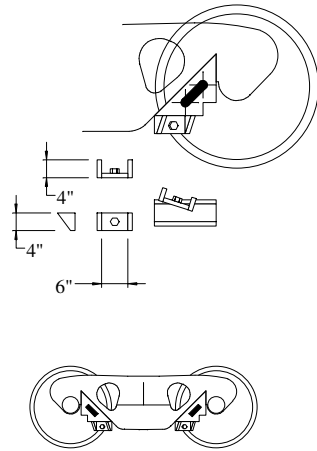
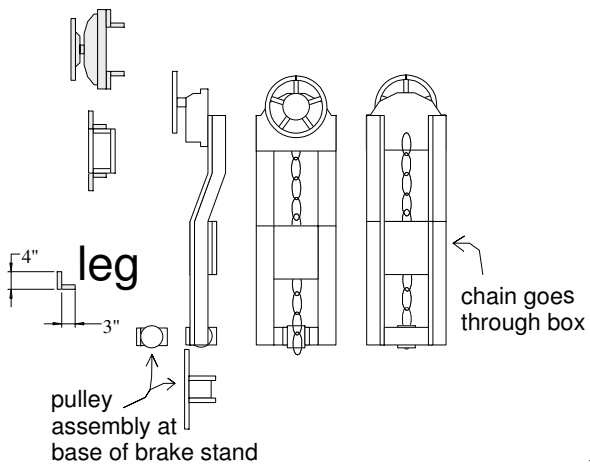


copyright Jonny Barnstorf 10/19/1999

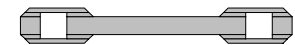
Cars are assembled in 3 unit sets.
When viewing set with units in order A-C-B
the hand brakes are on the right of each unit.

by mid '80s many sets
do not have side air lines



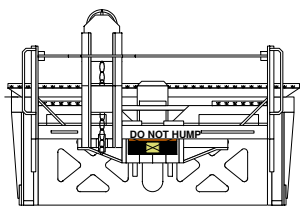


* For best fit use boss on coupler lid as a spacer

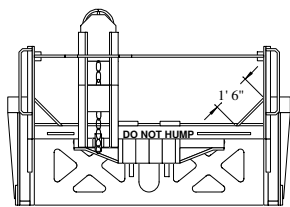


note there is a leg at the mid point of the inboard cross walkway front & back

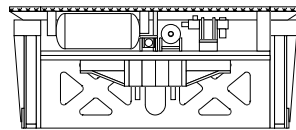
copyright Jonny Barnstorf 10/19/1999



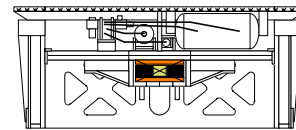
A A



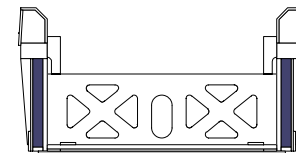
B B



C C



D D



E E